

FLP - HS

FLAME PROOF HOT AIR SEALING SYSTEM



Electrical Data

| | |
|----------------------------|---|
| Control System | : Closed Loop |
| Operating Voltage | : 440 V, 50 Hz, Three Phase regulated to +- 5% |
| Control Voltage | : 230 V 50 Hz, Single |
| Maximum System Current | : 12 Amps / Phase. |
| Max. Power Consumption | : 6.6 KW - 3 Phase. |
| Heater Specifications | : 2.2K.W. 230 V, 50 Hz Finned heater - 3 Nos. |
| Electrical Panel Enclosure | : 600 x 400 x 250- Main Panel. 300 x 300 x 150- Terminal Chamber |
| Panel Enclosure Group | : II A as per IS 13346/04 (IEC:60079-0/00) |
| Panel Temperature Class | : T3 as per IS 2148/04 (IEC-1/01) |
| Protection Class | : IP 65 as per IS 12063/87 (IEC:60529/89) |
| Max. Temperature | : 250° C Inside hot air chamber |
| Control Cable Size | : 2.5 sq.mm, CU, PVC Sheathed |
| Power Cable Size | : 4 core 6 sq.mm PVCAPVC, Copper Cable. |
| Earthing Connections | : 6 sq.mm copper wire. |

Mechanical Data

| | |
|-------------------------|--|
| Control System | : Closed loop |
| Control Signal Medium | : Pneumatic & Electrical. |
| A) For pneumatic panel: | Compressed air - Dry, Filtered & Non- Lubricated. |
| B) For Hot air Chamber: | Compressed air - dry, filtered & non- lubricated. |
| Operating Pressure† | : 5 bar for pneumatic system 4 bar for hot air chamber. |
| Sealing Time | : 3 sec., |
| No. Of Cylinders / Hour | : Refer chart |
| Air flow rate† | : 800 ltrs / min (free air delivery) Instrument grade clean dry oil free air suitably regulated to 5 bar |
| Control Pneumatic Tube | : 3 mm |
| Power Pneumatic tube | : 4 mm / 6 mm / 9 mm |
| Inter locks | : Electrical (Explosion proof solenoids & switches) |

Description

The FLP automatic hot air sealing system is designed to seal various type of LPG cylinder valves. The system is capable of sealing various size of LPG cylinders in mix and match fashion. The control system is electro-pneumatic, which provides a high degree of safety and sealing as required in group II A/II B hazardous locations like LPG bottling plants. These machine are capable of running in automatic mode without any human intervention.

| | |
|----------------------|------------------------|
| Type of protection | Flame Proof - Exd |
| Gas Groups | Group II A, II B |
| Finish | Epoxy Blue |
| CMRI Certificate No. | CMRI / TC / S / H 1165 |
| Approvals | CCE, BIS |

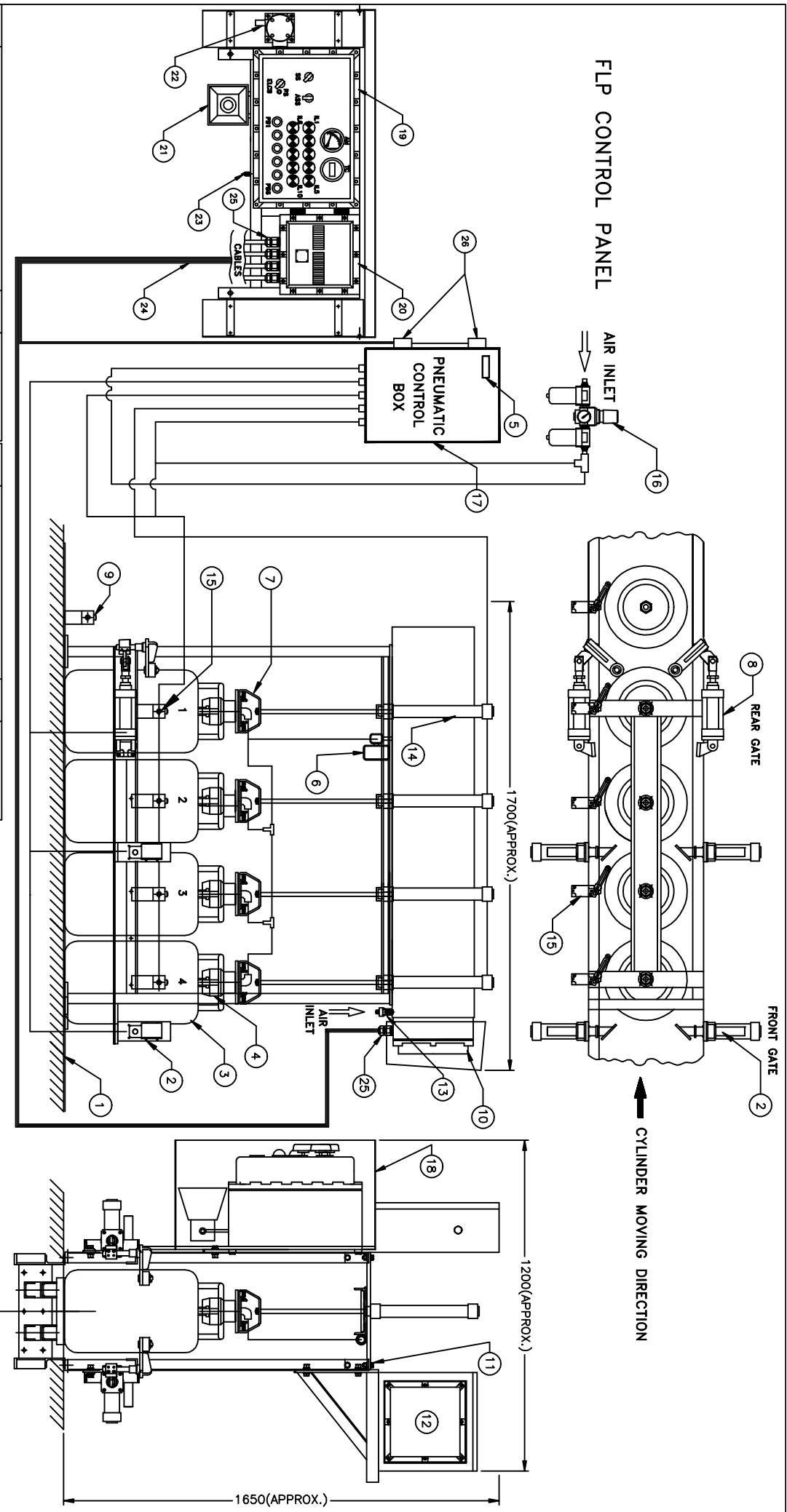
Production Rate

| Catalogue No. | Conveyor speed @ 16-18m/min. |
|---------------|------------------------------|
| FLP - HS2 | 900 cylinders/hour |
| FLP - HS3 | 1200 cylindr/hour |
| FLP - HS4 | 1500 cylindr/hour |
| FLP - HS6 | 1800 cylindr/hour |

MIX & MATCH can be provided to suit various sizes

* Indicates minimum parameters of site condition to be provided by the user. User to provide 4C x 6 sq.mm PVCAPVC copper cable & 6 sq.mm earth wire (copper) at a point close to place of operation.

† Indicates minimum parameters of site condition to be provided by the user. User should provide compressed air as above at a point close to the place of operation through ¾" conduit (F) with a Ball valve.



| S.No. | DESCRIPTION | QTY. | MAKE | 14 | 15 | 16 | 17 | 18 | 19 | 20 | 21 | 22 | 23 | 24 | 25 | 26 |
|-------|-----------------------------------|------|--------------|----|----|----|----|----|----|----|----|----|----|----|----|----|
| 1 | CHAIN CONVEYOR | - | - | 14 | 15 | 16 | 17 | 18 | 19 | 20 | 21 | 22 | 23 | 24 | 25 | 26 |
| 2 | PNEUMATIC FRONT GATE | 2 | BALUGA/FESTO | 15 | 16 | 17 | 18 | 19 | 20 | 21 | 22 | 23 | 24 | 25 | 26 | |
| 3 | LPG CYLINDERS | - | - | 16 | 17 | 18 | 19 | 20 | 21 | 22 | 23 | 24 | 25 | 26 | | |
| 4 | SEALING GUNS | 4 | BALUGA | 17 | 18 | 19 | 20 | 21 | 22 | 23 | 24 | 25 | 26 | | | |
| 5 | TOTALING COUNTER | 4 | FESTO | 18 | 19 | 20 | 21 | 22 | 23 | 24 | 25 | 26 | | | | |
| 6 | HOT AIR ON/OFF VALVE | 1 | AVCON | 19 | 20 | 21 | 22 | 23 | 24 | 25 | 26 | | | | | |
| 7 | CENTRING DEVICE | 4 | BALUGA | 20 | 21 | 22 | 23 | 24 | 25 | 26 | | | | | | |
| 8 | PNEUMATIC REAR GATES | 2 | BALUGA/FESTO | 21 | 22 | 23 | 24 | 25 | 26 | | | | | | | |
| 9 | SYSTEM COUNTER LIMIT SWITCH | 1 | BALUGA | 22 | 23 | 24 | 25 | 26 | | | | | | | | |
| 10 | FLP TERMINAL CHAMBER(300X300X150) | 1 | BALUGA | 23 | 24 | 25 | 26 | | | | | | | | | |
| 11 | SUPPORT FRAME | 1 | BALUGA | 24 | 25 | 26 | | | | | | | | | | |
| 12 | FLAMEPROOF HOT AIR CHAMBER | 1 | BALUGA | 25 | 26 | | | | | | | | | | | |
| 13 | NON RETURN VALVE | 1 | FESTO | 26 | | | | | | | | | | | | |

| | | | | | |
|---|--|------------------------------|--|-------------------|--|
| TITLE : EXPLOSIONPROOF LPG HOT AIR SEALING SYSTEM - 4 GUN | | FINISH : EPOXY BLUE | | CAT NO : FLPHS 04 | |
| CUSTOMER : | | NAME : | | CLASS : | |
| CMRS : CMR/TC/S/H/1165 | | IS:13346/04 (IEC:60079-0/00) | | FLPHS 04 | |
| CCE No.: R1(1)136/BALUGA/12-XVI | | IS:2148/04 (IEC:60079-1/01) | | REV-1 | |
| IS:12063/87 (IEC:60529/89) | | IS:12063/87 (IEC:60529/89) | | REV-2 | |
| Baluga Lighting Equipments Private Limited | | DRN. YSK 27.08.02 | | SHEET 1 OF 1 | |
| KOVLAMBAKKAM, CHENNAI-600117, INDIA. | | CHKD. GA 27.08.02 | | PRG. NO. | |
| | | APPD. KS 27.08.02 | | REV | |
| | | | | 0 | |

FOR INFORMATION ONLY